

# COLLINS TOWNSHIP

Each township has six files containing six sections in each, and one file containing all 36 sections.

Collins01to06.pdf  
Collins07to12.pdf  
Collins13to18.pdf  
Collins19to24.pdf  
Collins25to30.pdf  
Collins31to36.pdf  
CollinsAll36.pdf

The points are listed starting with the point above the SE corner and continuing in a counter-clockwise rotation around the section. This normally begins with the East point, Northeast, then North, but may also include Witness Corners, and/or Meander Corners.

## **Definitions**

**Witness Corner:** A witness corner “stands in” when the true corner cannot be monumented or occupied because of difficult terrain or obstruction of the corner sight. The witness corner must be on the section line and is usually 5 or 10 chains away from the true corner.

**Meander Corner:** The intersection of a township, range, or section line and the banks of a navigable stream or meandering body of water.

East Quarter corner, Section 19, Township 115 North, Range 30 West

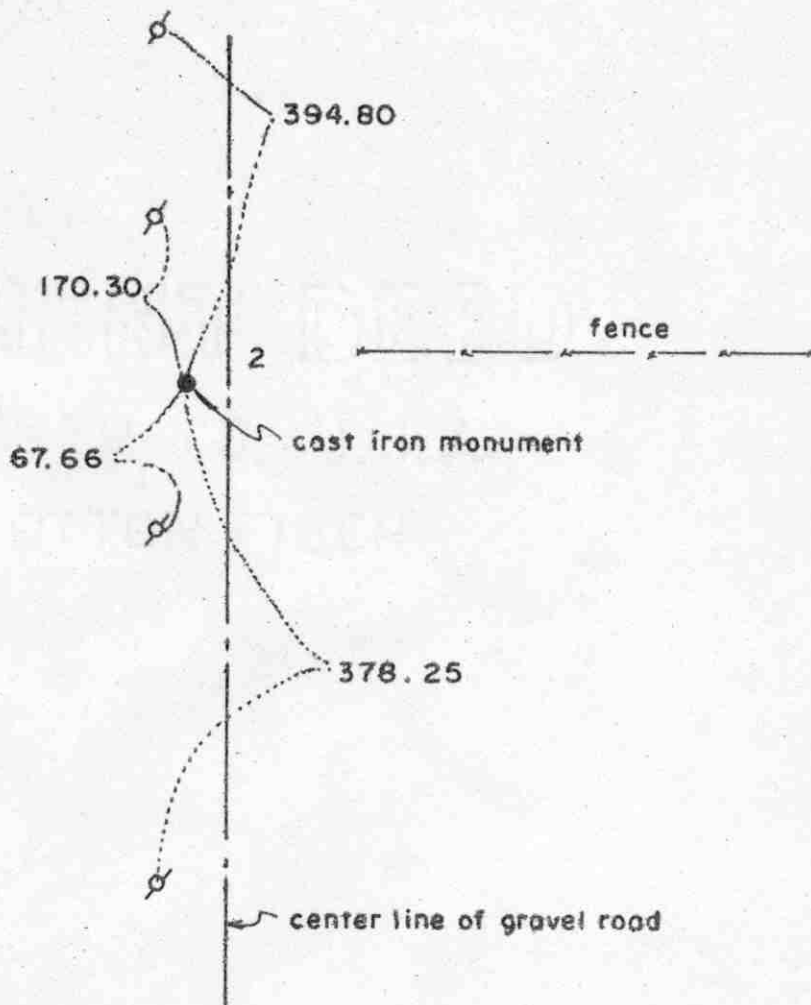
# Certificate of Location of Government Corner



## SKETCH OF REFERENCE TIES

(NO SCALE)

Nail and disc on  
east side of each  
power pole shown



Statement of evidence relative to this corner location on sheet 2

I hereby certify that this document  
was prepared by me or under my  
direct supervision.

Willard Pellinen

Willard Pellinen  
McLeod County Surveyor  
License No. 9626

Date 1/22/89

OFFICE OF THE COUNTY RECORDER  
MCLEOD COUNTY, MINNESOTA.

I hereby certify that this document was filed in this  
office at 1 o'clock P.M. on the 31st day  
of Jan., 19 89.

Carmen Ostlie, County Recorder

By \_\_\_\_\_, Deputy

Document No. 226729

East Quarter corner, Section 19, Township 115 North, Range 30 West

## *Certificate of Location of Government Corner*

This corner was established in 1855 by Thomas Simpson of the Government Land Office. He set post in mound with trench, pits and charred stake and he planted osage orange seeds at the northeast and southwest corners of the mound.

In 1895, I.C.Christlieb resurveyed the Township of Collins and set an iron monument at this corner.

In august 1974, we found the monument set by Christlieb and replaced it with a McLeod County cast iron monument.

In September, 1988, we measured the east line of Section 19. Our distance from the east quarter corner to the northeast corner was 2678.26 compared with a distance of 2661.5 by Christlieb, and we had 2661.86 to the southeast corner compared with 2661.5 feet by Christlieb.

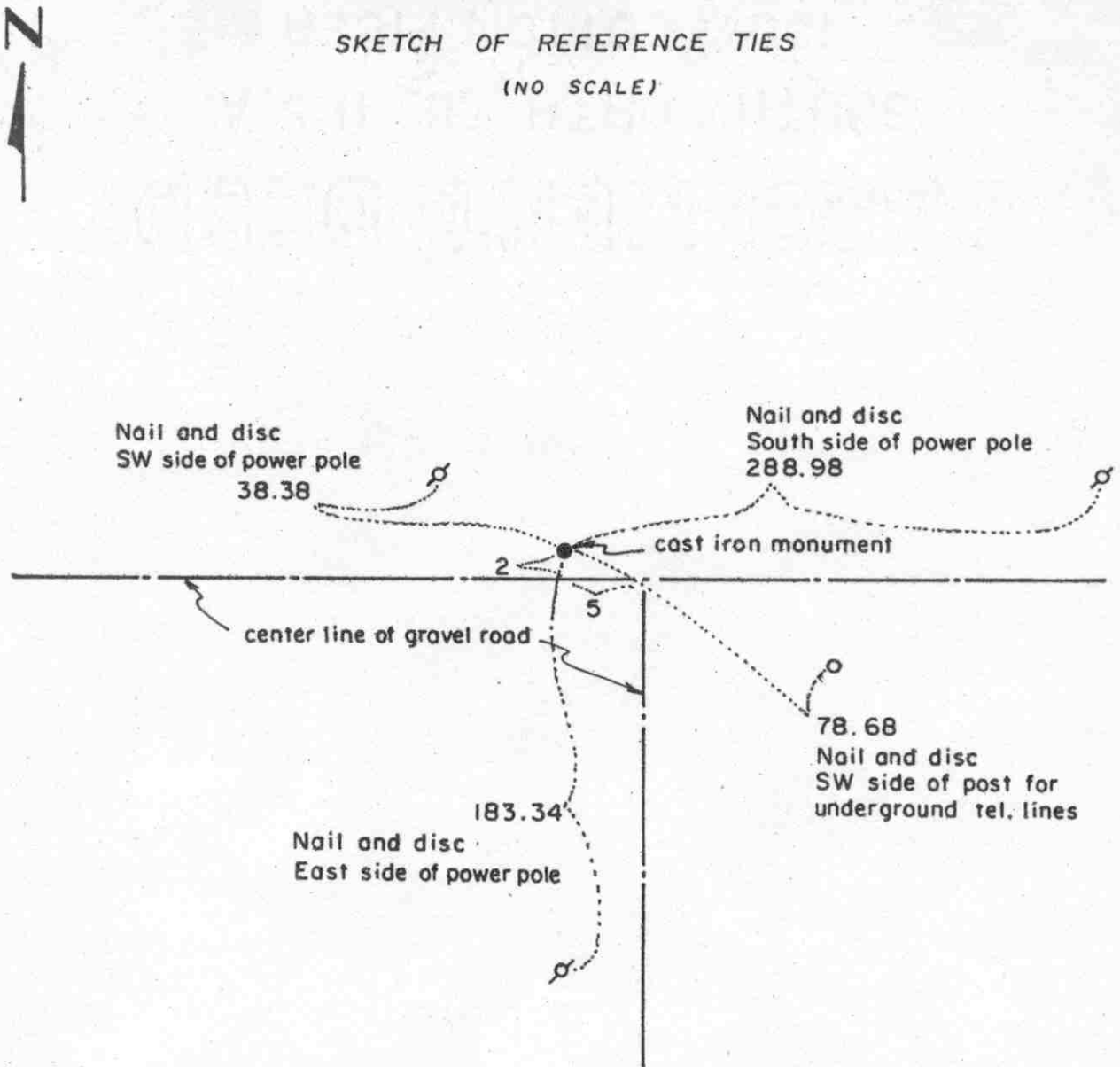
The monument set by Christlieb has perpetuated the correct location of the east quarter corner of Section 19.

Northeast corner, Section 19, Township 115 North, Range 30 West

## Certificate of Location of Government Corner

SKETCH OF REFERENCE TIES

(NO SCALE)

Statement of evidence relative to this corner location on sheet 2

I hereby certify that this document  
was prepared by me or under my  
direct supervision.

Willard Pellinen

Willard Pellinen  
McLeod County Surveyor  
License No. 9626

Date 2/1/89

OFFICE OF THE COUNTY RECORDER  
MCLEOD COUNTY, MINNESOTA.

I hereby certify that this document was filed in this  
office at 3 o'clock P.M. on the 9th day  
of Feb., 19 89.

Armen Ostlie, County Recorder

By \_\_\_\_\_, Deputy

Document No. 226874

## *Certificate of Location of Government Corner*

This corner was established in 1855 by Thomas Simpson of the Government Land Office. He set post, erected mound with trench and pits, charred stake and planted osage orange seeds at corners of mound.

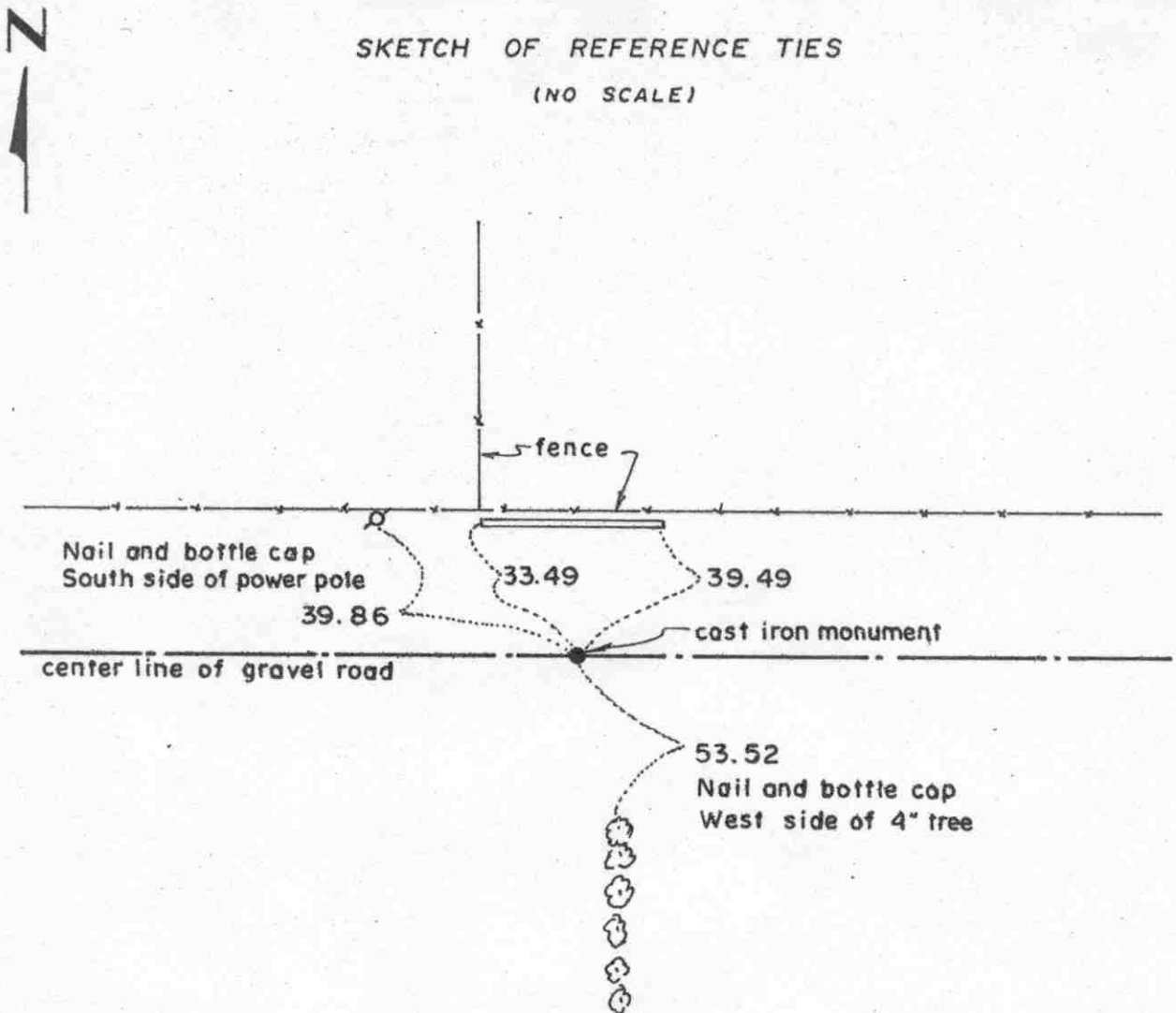
In 1895, I.C.Christlieb resurveyed the Township of Collins and set an iron monument at this corner.

On August 1, 1974, we found the iron monument set by Christlieb ( $2\frac{1}{2}$  inches square on top) down 2 feet below the surface of the gravel road. We took reference ties and set a McLeod County cast iron monument over the found monument.

We feel the monument set by Christlieb in 1895 has perpetuated the correct location of the northeast corner of Section 19.

North Quarter corner, Section 19, Township 115 North, Range 30 West

## Certificate of Location of Government Corner

SKETCH OF REFERENCE TIES  
(NO SCALE)Statement of evidence relative to this corner location on sheet 2

I hereby certify that this document  
was prepared by me or under my  
direct supervision.

Willard Pellinen

Willard Pellinen  
McLeod County Surveyor  
License No. 9626

Date 1/21/89

OFFICE OF THE COUNTY RECORDER  
MCLEOD COUNTY, MINNESOTA.

I hereby certify that this document was filed in this  
office at 1 o'clock P.M. on the 31st day  
of Jan. 1989.

Carmin Ostlie, County Recorder

By \_\_\_\_\_, Deputy

Document No. 226730

North Quarter corner, Section 19, Township 115 North, Range 30 West

## *Certificate of Location of Government Corner*

This corner was originally established by Thomas Simpson of the Government Land Office i 1855. He set a post in mound with trench and pits and charred stake and he planted osage orange seeds on the northeast and southwest corners of the mound.

In 1895, I.C.Christlieb resurveyed the Township of Collins and set an iron monument at this corner.

On June 11, 1981, we dug for this corner, John Tupa from Hutchinson with a backhoe. We found a large ( $2\frac{1}{2}$  foot diam.) stone down 3 feet below the road surface.

On August 17, 1981, we set a McLeod County cast iron monument on the center line of the gravel road on a proration of the 1895 distances by Christlieb to the section corners. This monument is over the stone we found in June.

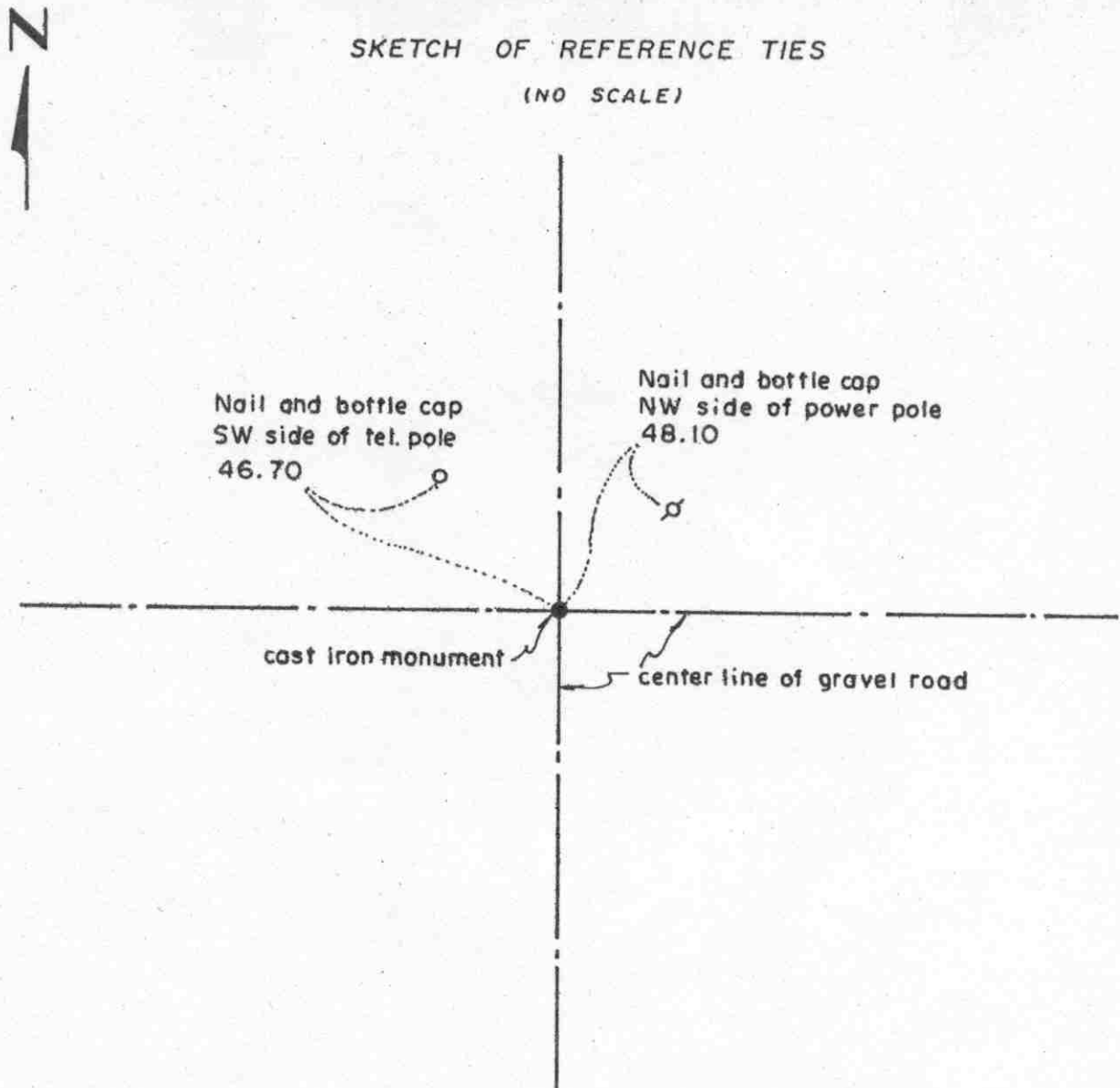
We feel the stone and the distances by Christlieb have perpetuated the correct location of the quarter corner.

Northwest corner, Section 19, Township 115 North, Range 30 West

# Certificate of Location of Government Corner

SKETCH OF REFERENCE TIES

(NO SCALE)



Statement of evidence relative to this corner location on sheet 2

I hereby certify that this document was prepared by me or under my direct supervision.

Willard Pellinen

Willard Pellinen  
McLeod County Surveyor  
License No. 9626

Date 1/15/89

OFFICE OF THE COUNTY RECORDER  
MCLEOD COUNTY, MINNESOTA.

I hereby certify that this document was filed in this office at 1 o'clock P.M. on the 31st day of Jan. 19 89.

Carmen Ostlie, County Recorder

By \_\_\_\_\_, Deputy

Document No. 226731



Northwest corner, Section 19, Township 115 North, Range 30 West

## Certificate of Location of Government Corner

This corner was established in 1855 by John Ryan of the Government Land Office. He set post at corner, deposited charcoal, dug pits and trench, built mound and planted osage orange seeds at corners of mound.

In 1895, I.C.Christlieb resurveyed the Township of Collins and his map shows a stone at this corner.

1912 survey by Dahlgren shows a steel shaft at this corner.

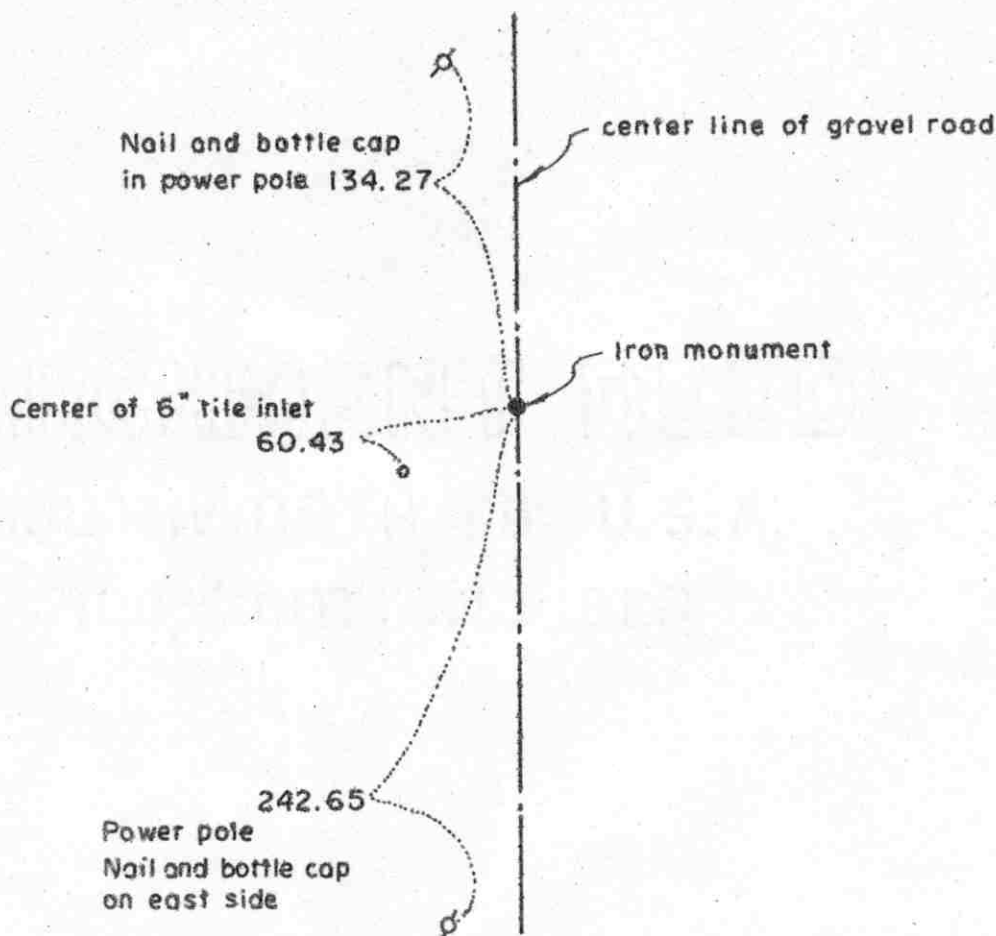
In June 1981, we dug for corner and found a steel shaft and wood stake over a stone and iron pin. Our distance to the west quarter corner of Section was within 0.2 foot of distance by Dahlgren in 1912.

We feel this corner has been perpetuated by the stone as shown by Christlieb survey and by the steel shaft as shown in survey by Dahlgren in 1912.

In June, 1981, we set a McLeod County cast iron monument in place of the steel shaft.

## Certificate of Location of Government Corner

SKETCH OF REFERENCE TIES  
(NO SCALE)



Statement of evidence relative to this corner location on sheet 2

I hereby certify that this document  
was prepared by me or under my  
direct supervision.

Willard Pellinen

Willard Pellinen  
McLeod County Surveyor  
License No. 9626

Date 1/22/89

OFFICE OF THE COUNTY RECORDER  
MCLEOD COUNTY, MINNESOTA.

I hereby certify that this document was filed in this  
office at 1 o'clock P.M. on the 31st day  
of Jan., 19 89.

Carmin Postle, County Recorder

By \_\_\_\_\_, Deputy

Document No. 226732

## *Certificate of Location of Government Corner*

This corner was established by John Ryan of the Government Land Office in 1855. He set post in marsh, deposited charcoal, dug pits and trench, built mound and planted osage orange seeds at the corners of the mound.

In 1895, I.C.Christlieb resurveyed the Township of Collins and set an iron monument at this corner.

On August 17, 1981, we found the iron monument set by Christlieb down 4 inches below the road surface. This monument measured  $2\frac{1}{2}$  inches by  $1\frac{1}{2}$  inches at the top. Our distances to the northwest and southwest corners of the section were within 2 feet of 1895 distances by Christlieb.

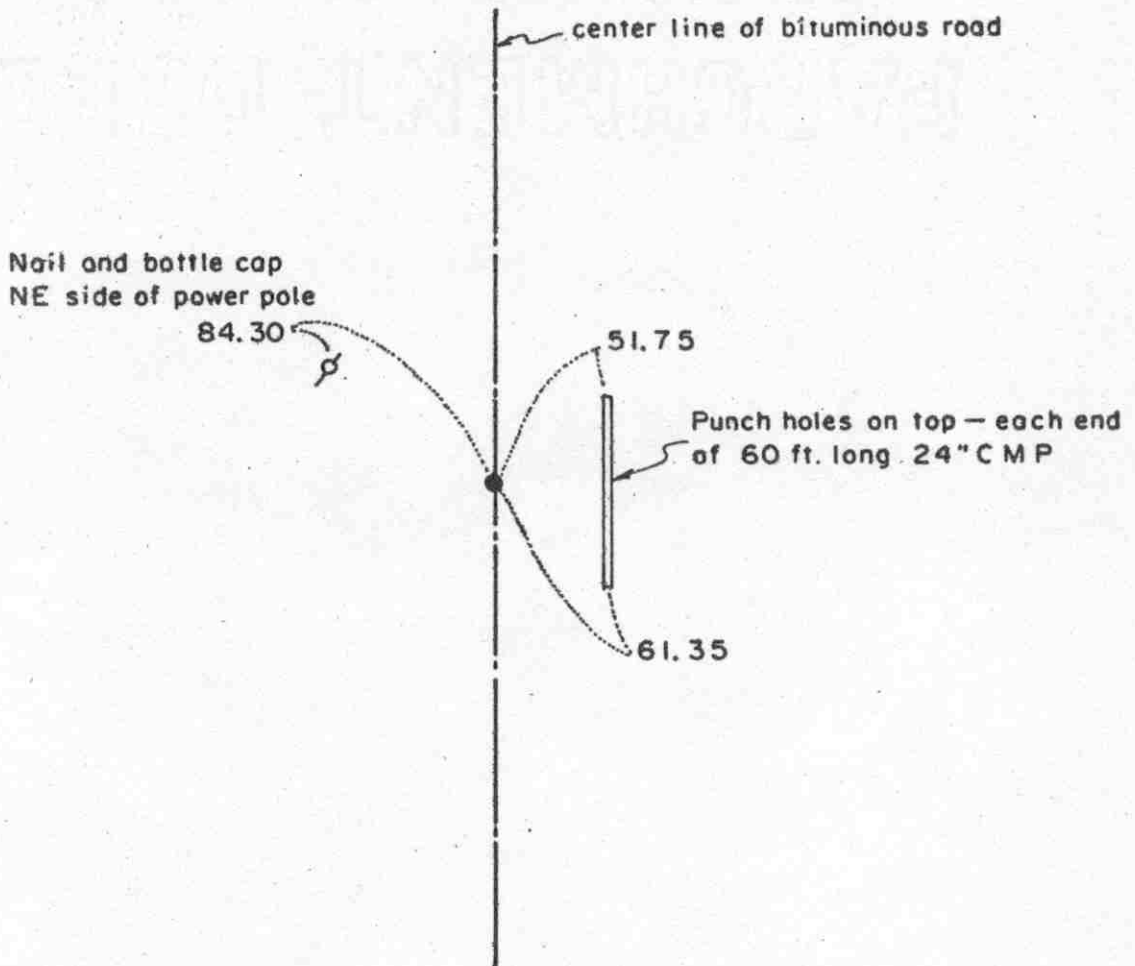
We feel this is the correct location of the west quarter corner of Section 19 as perpetuated by the monument set by Christlieb in 1895.

East Quarter corner, Section 20, Township 115 North, Range 30 West

# Certificate of Location of Government Corner



SKETCH OF REFERENCE TIES  
(NO SCALE)



Statement of evidence relative to this corner location on sheet 2

I hereby certify that this document was prepared by me or under my direct supervision.

Willard Pellinen

Willard Pellinen  
McLeod County Surveyor  
License No. 9626

Date 2/2/89

OFFICE OF THE COUNTY RECORDER  
MCLEOD COUNTY, MINNESOTA.

I hereby certify that this document was filed in this office at 3 o'clock P. M. on the 9th day of Feb 1989.

Carmen Potlie, County Recorder  
By \_\_\_\_\_, Deputy

Document No. 226876

## *Certificate of Location of Government Corner*

This corner was originally set by Thomas Simpson of the Government Land Office in 1855. His notes state he set post in mound with trench and pits, set charred stake and planted osage orange seeds on the northeast and southwest corners of the mound.

In 1895, I. C. Christlieb resurveyed the Township of Collins and set an iron monument at this corner.

In March, 1974, we measured the east line of Section 20 and set a temporary corner over a "reading" with a metal detector.

On May 18, 1974, we dug for corner, John Tupa, Hutchinson, with a backhoe. We found the iron monument set by Christlieb down 4 feet below the road surface, took a photo and tied off.

On July 21, 1980, we set a McLeod County cast iron monument over the found monument and took additional ties.

On April 11, 1987, we took some long distance ties. Road to be rebuilt.

On August 19, 1988, we set a railroad spike at the corner and took new reference ties.

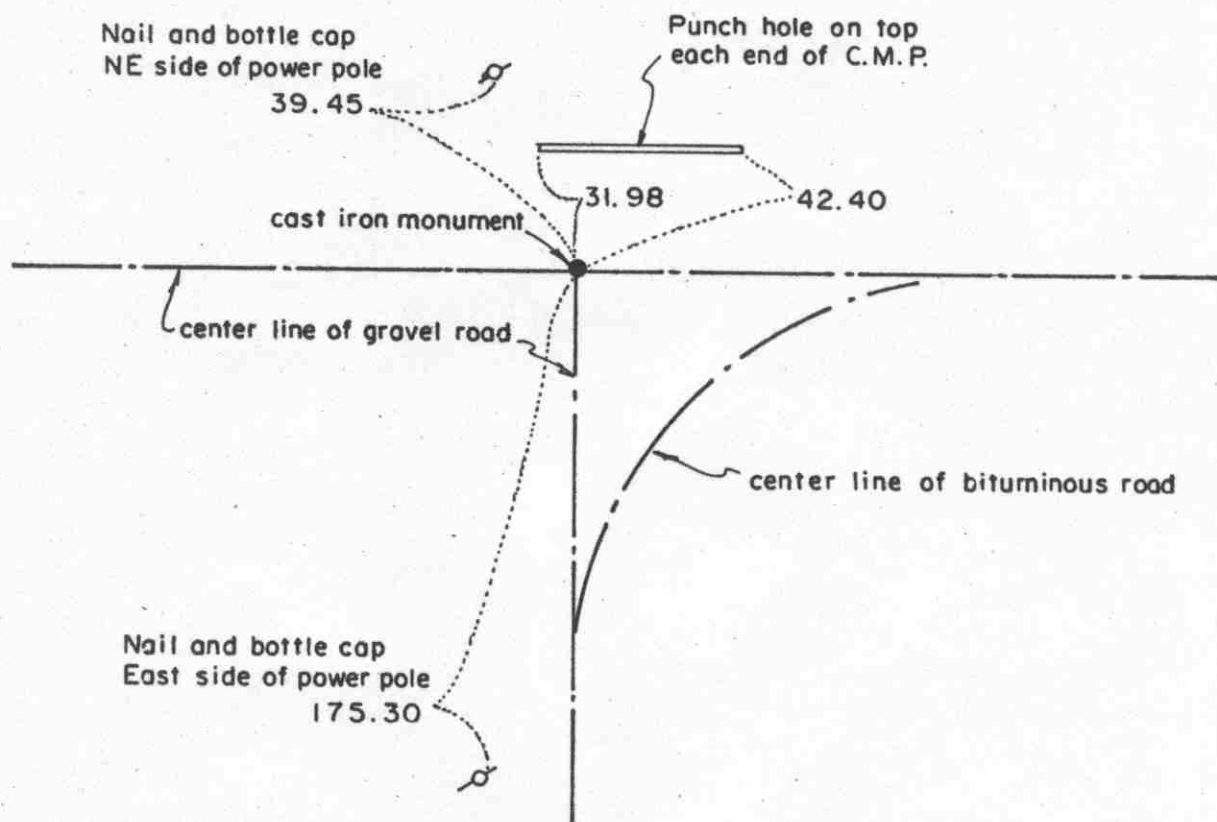
The iron monument set by Christlieb in 1895 has perpetuated the correct location of the quarter corner.

Northeast corner, Section 20, Township 115 North, Range 30 West

# Certificate of Location of Government Corner



SKETCH OF REFERENCE TIES  
(NO SCALE)



Statement of evidence relative to this corner location on sheet 2

I hereby certify that this document was prepared by me or under my direct supervision.

Willard Pellinen

Willard Pellinen  
McLeod County Surveyor  
License No. 9626

Date 2/2/89

OFFICE OF THE COUNTY RECORDER  
MCLEOD COUNTY, MINNESOTA.

I hereby certify that this document was filed in this office at 3 o'clock P.M. on the 9th day of Feb, 19 89.

Carmen Gottlieb, County Recorder  
By \_\_\_\_\_, Deputy

Document No. 226875

Northeast corner, Section 20, Township 115 North, Range 30 West

## Certificate of Location of Government Corner

This corner was established in 1855 by Thomas Simpson of the Government Land Office. His notes state he set post, erected mound with trench and pits, set charred stake and planted osage orange seeds at corners of mound.

In 1855, I. C. Christlieb resurveyed the Township of Collins and set an iron monument at this corner.

In March, 1974, we found monument set by Christlieb, and in July, 1980, we replaced found monument with a McLeod County cast iron monument, and took reference ties.

On August 19, 1988, we checked reference ties. Ties checked ok.

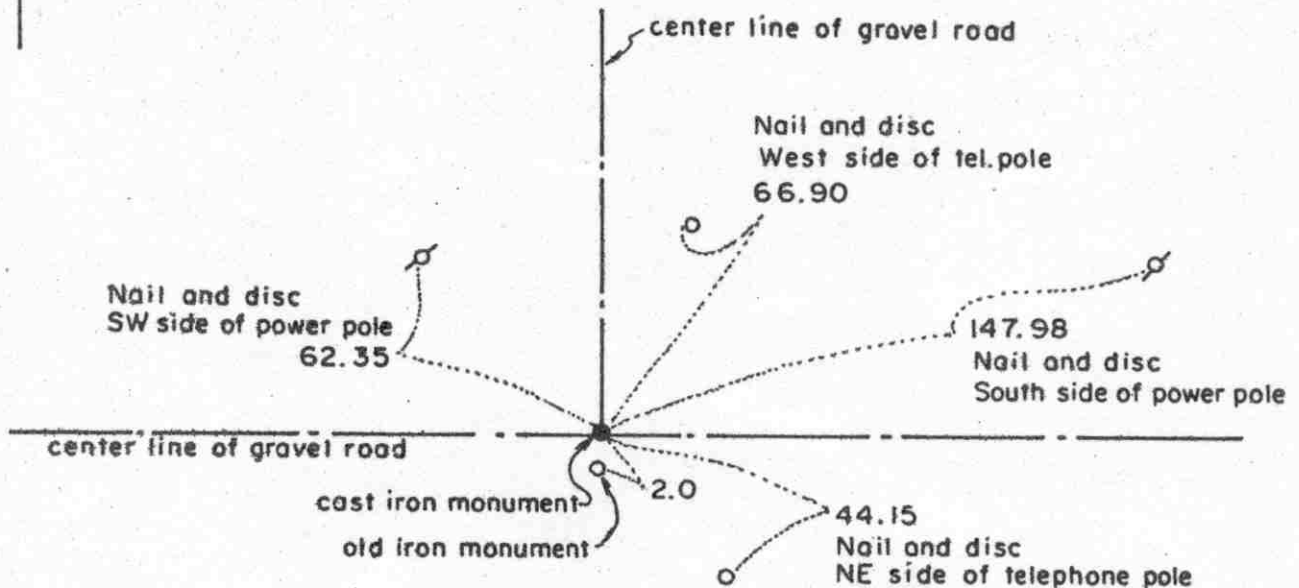
The monument set by Christlieb in 1895 has perpetuated the correct location of the northeast corner of Section 20.

North Quarter corner, Section 20, Township 115 North, Range 30 West

# Certificate of Location of Government Corner

## SKETCH OF REFERENCE TIES

(NO SCALE)



Statement of evidence relative to this corner location on sheet 2

I hereby certify that this document was prepared by me or under my direct supervision.

Willard Pellinen

Willard Pellinen  
McLeod County Surveyor  
License No. 9626

Date 2/1/89

OFFICE OF THE COUNTY RECORDER  
MCLEOD COUNTY, MINNESOTA.

I hereby certify that this document was filed in this office at 3 o'clock P.M. on the 9th day of Feb, 1989.

Carmen Ostlie, County Recorder

By \_\_\_\_\_, Deputy

Document No. 226877



North Quarter corner, Section 20, Township 115 North, Range 30 West

## Certificate of Location of Government Corner

This corner was established in 1855 by Thomas Simpson of the Government Land Office. His notes state he set quarter section post in mound, with trench, pits and charred stake and he planted osage orange seeds at northeast and southwest corners of mound.

In 1895, I. C. Christlieb resurveyed the Township of Collins and set an iron monument 2 feet south of the quarter corner.

On August 1, 1974, we found the iron monument set by Christlieb under a large flat stone. The top of the stone was 2 feet below the surface of the road. We took reference ties to the monument.

On September 16, 1974, we set a McLeod County cast iron monument 2.00 feet north of the found iron monument and took reference ties.

We measured 2646.12 feet to the northwest corner and 2653.51 feet to the northeast corner of Section 20, compared with Christlieb's distances of 2647.5 feet to each section corner.

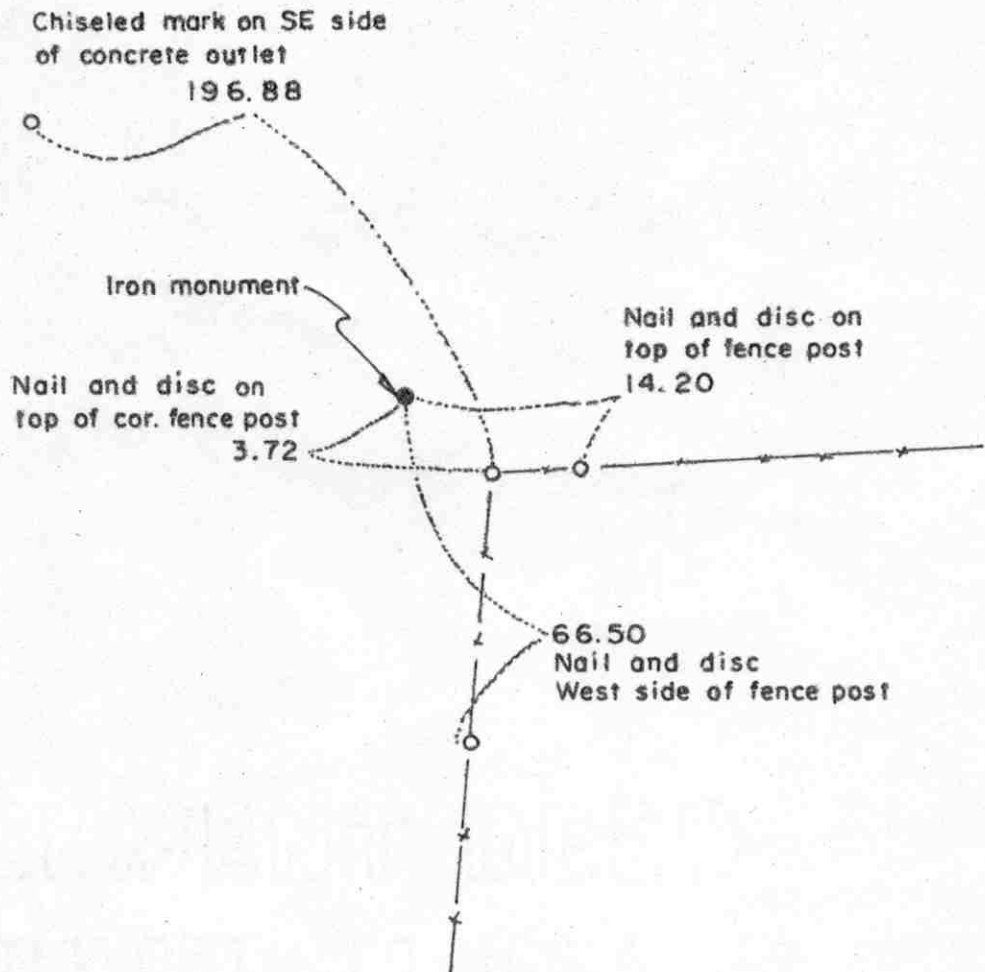
This was an obliterated corner, whose location has been perpetuated by Christlieb's distance to the iron monument set by him.

## Certificate of Location of Government Corner



## SKETCH OF REFERENCE TIES

(NO SCALE)

Statement of evidence relative to this corner location on sheet 2

I hereby certify that this document was prepared by me or under my direct supervision.

Willard Pellinen

Willard Pellinen  
McLeod County Surveyor  
License No. 9626

Date 1/7/89

OFFICE OF THE COUNTY RECORDER  
MCLEOD COUNTY, MINNESOTA.

I hereby certify that this document was filed in this office at 1 o'clock P.M. on the 31st day of Jan., 1989.

Carmin Ostlie, County Recorder  
By \_\_\_\_\_, Deputy

Document No. 226734

East Quarter        corner, Section 21, Township 115 North, Range 30 West

## Certificate of Location of Government Corner

This corner was established in 1855 by Thomas Simpson of the Government Land Office. His notes show the corner was in a marsh. He set post in mound with trench and pits and charred stake and he planted osage orange seeds on the northeast and southwest corners of mound.

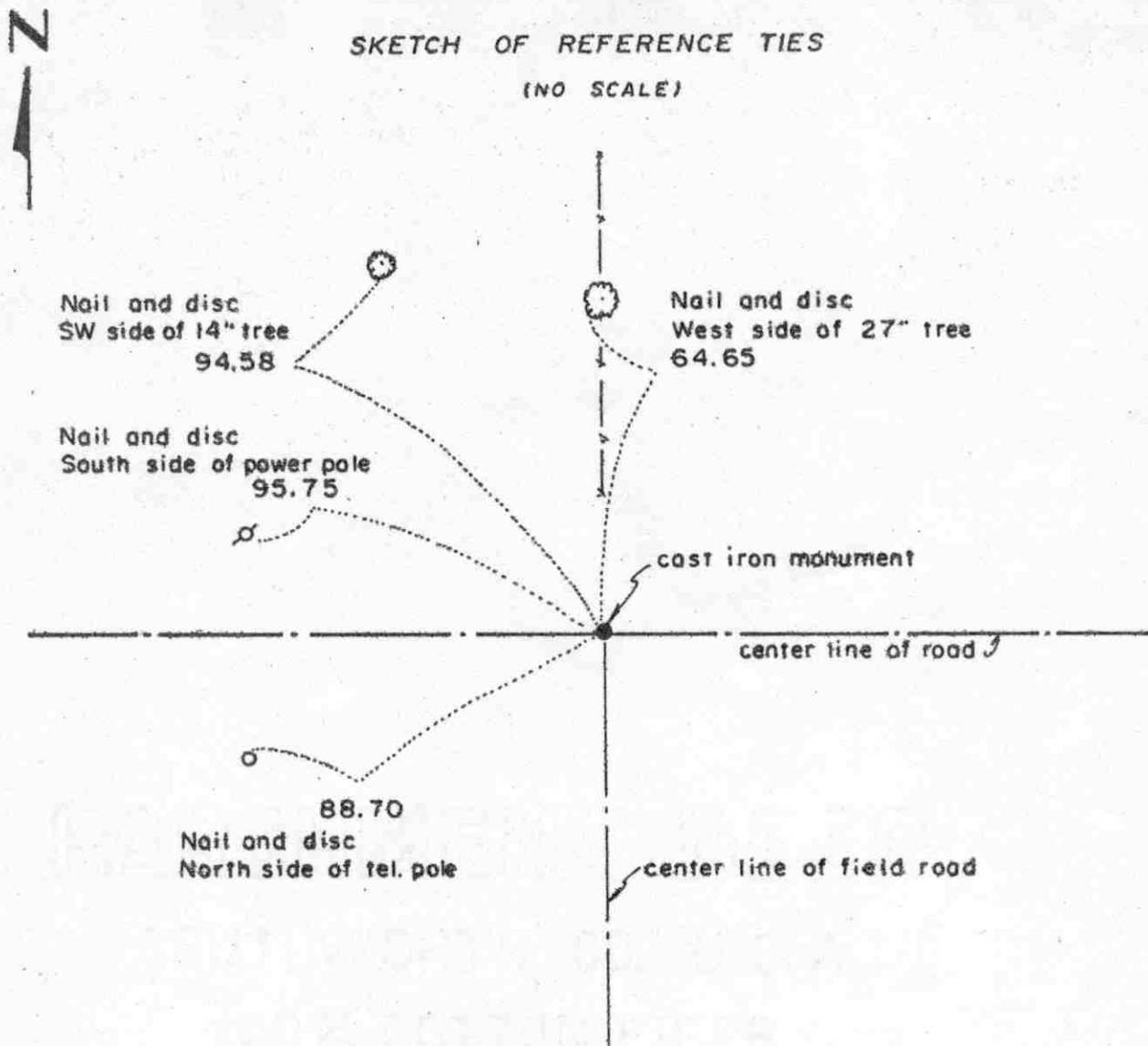
In 1895, I. C. Christlieb resurveyed the Township of Collins and set an iron monument at the corner.

On March 26, 1974, we found the iron monument set by Christlieb, top of monument was  $2\frac{1}{2}$  inches by  $1\frac{1}{2}$  inches and was down 1 foot below the surface. We took available reference ties.

This corner location has been perpetuated by the iron monument set by Christlieb in 1895.

Northeast corner, Section 21, Township 115 North, Range 30 West

## Certificate of Location of Government Corner

SKETCH OF REFERENCE TIES  
(NO SCALE)Statement of evidence relative to this corner location on sheet 2

I hereby certify that this document was prepared by me or under my direct supervision.

Willard PellinenWillard Pellinen  
McLeod County Surveyor  
License No. 9626Date 1/8/89OFFICE OF THE COUNTY RECORDER  
MCLEOD COUNTY, MINNESOTA.I hereby certify that this document was filed in this office at 1 o'clock P.M. on the 31st day of Jan., 19 89.Carmen Estlie, County Recorder

By \_\_\_\_\_, Deputy

Document No. 226733

Northeast corner, Section 21, Township 115 North, Range 30 West

## Certificate of Location of Government Corner

This corner was established in 1855 by Thomas Simpson of the Government Land Office. His notes state he set post, erected mound with trench and pits and charred stake and planted osage orange seeds at each angle.

In 1895, I. C. Christlieb resurveyed the Township of Collins and set an iron monument at this corner.

On April 18, 1973, we chained the north line of Section 21 and set a temporary northeast corner on the center line of the road running east and west and fence line north and field road south.

On July 12, 1973, we dug for corner, John Tupa of Hutchinson, with a backhoe. We found the iron monument set by Christlieb down 6 feet below the road surface. The top of the monument is  $2\frac{1}{2}$  inches square. We took reference ties and a photo of the monument.

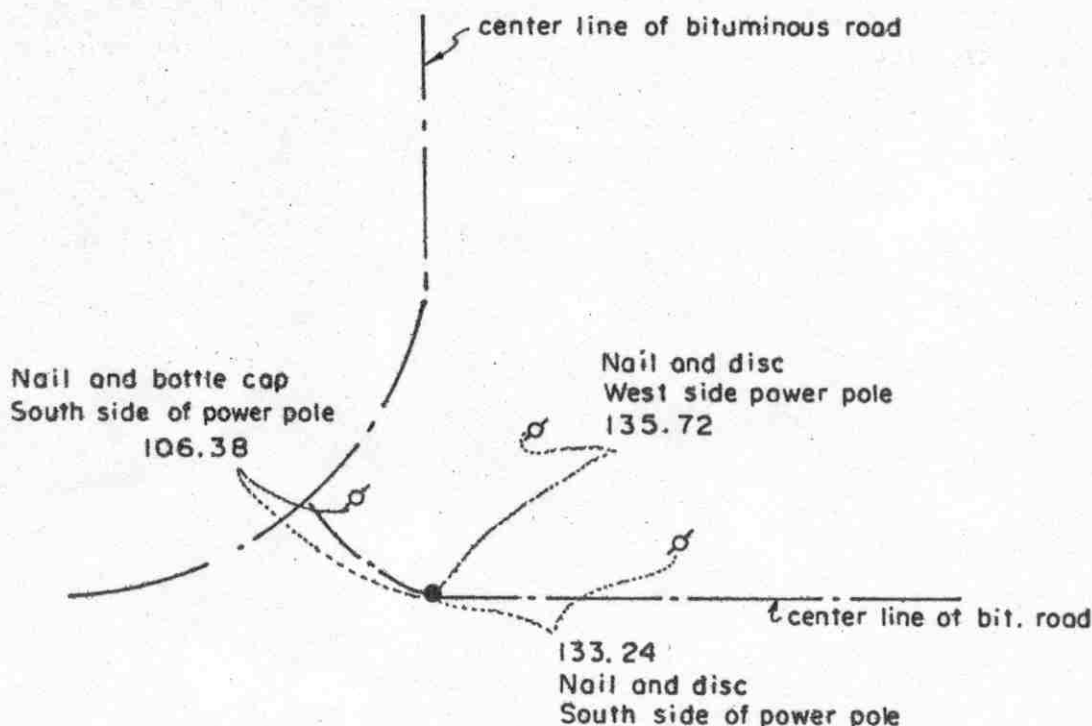
On June 11, 1974, we set a Mcleod County monument and took additional reference ties.

We feel the monument set by Christlieb in 1895 has perpetuated the correct location of the northeast corner of Section 21.

# Certificate of Location of Government Corner



## SKETCH OF REFERENCE TIES (NO SCALE)



Statement of evidence relative to this corner location on sheet 2

I hereby certify that this document was prepared by me or under my direct supervision.

Willard Pellinen

Willard Pellinen  
McLeod County Surveyor  
License No. 9626

Date 1/7/89

OFFICE OF THE COUNTY RECORDER  
MCLEOD COUNTY, MINNESOTA.

I hereby certify that this document was filed in this office at 1 o'clock P.M. on the 31st day of Jan., 19 89.

Armen Ostlie, County Recorder

By \_\_\_\_\_, Deputy

Document No. 226735

North Quarter corner, Section 21, Township 115 North, Range 30 West

## Certificate of Location of Government Corner

This corner was established in 1855 by Thomas Simpson of the Government Land Office. His notes state he set post in mound with trench and pits and charred stake and planted osage orange seeds at northeast and southwest corners of mound.

In 1895, I. C. Christlieb resurveyed the Township of Collins and set an iron monument 4 feet north of the true corner.

On April 18, 1973, we chained the north line of Section 21 and set temporary north quarter corner on center line of road running east and west, fence south, and center line of road north.

On July 12, 1973, we dug for corner, John Tupa of Hutchinson with a backhoe. We found a 16 inch diameter stone down 3 feet below the road surface and an iron monument down  $4\frac{1}{2}$  feet below the surface, directly below the stone. We took reference ties and a photo of the monument.

On July 20, 1973, we set a spike at the true corner, 4 feet north of the monument, and took reference ties.

On June 13, 1974, we set a McLeod County cast iron monument at the corner and took additional reference ties.

On April 11, 1987, we took longer reference ties, road to be rebuilt and reference ties destroyed.

On August 17, 1988, we reset corner (after road construction) We set a railroad spike and took new reference ties.

We believe the monument set by Christlieb in 1895 has perpetuated the correct location of the north quarter corner.



Nail and bottle cap  
West side of most w'ly  
triple 14" box elder

**fence**

-iron monument

field line

I hereby certify that this document  
was prepared by me or under my  
direct supervision.

Willard Pellinen  
McLeod County Surveyor  
License No. 9626

OFFICE OF THE COUNTY RECORDER  
MCLEOD COUNTY, MINNESOTA.

I hereby certify that this document was filed in this office at 1 o'clock P.M. on the 31st day of Jan., 1989.

Carmen Collier, County Recorder

By \_\_\_\_\_, Deputy

Document No. 226736



East Quarter corner, Section 22, Township 115 North, Range 30 West

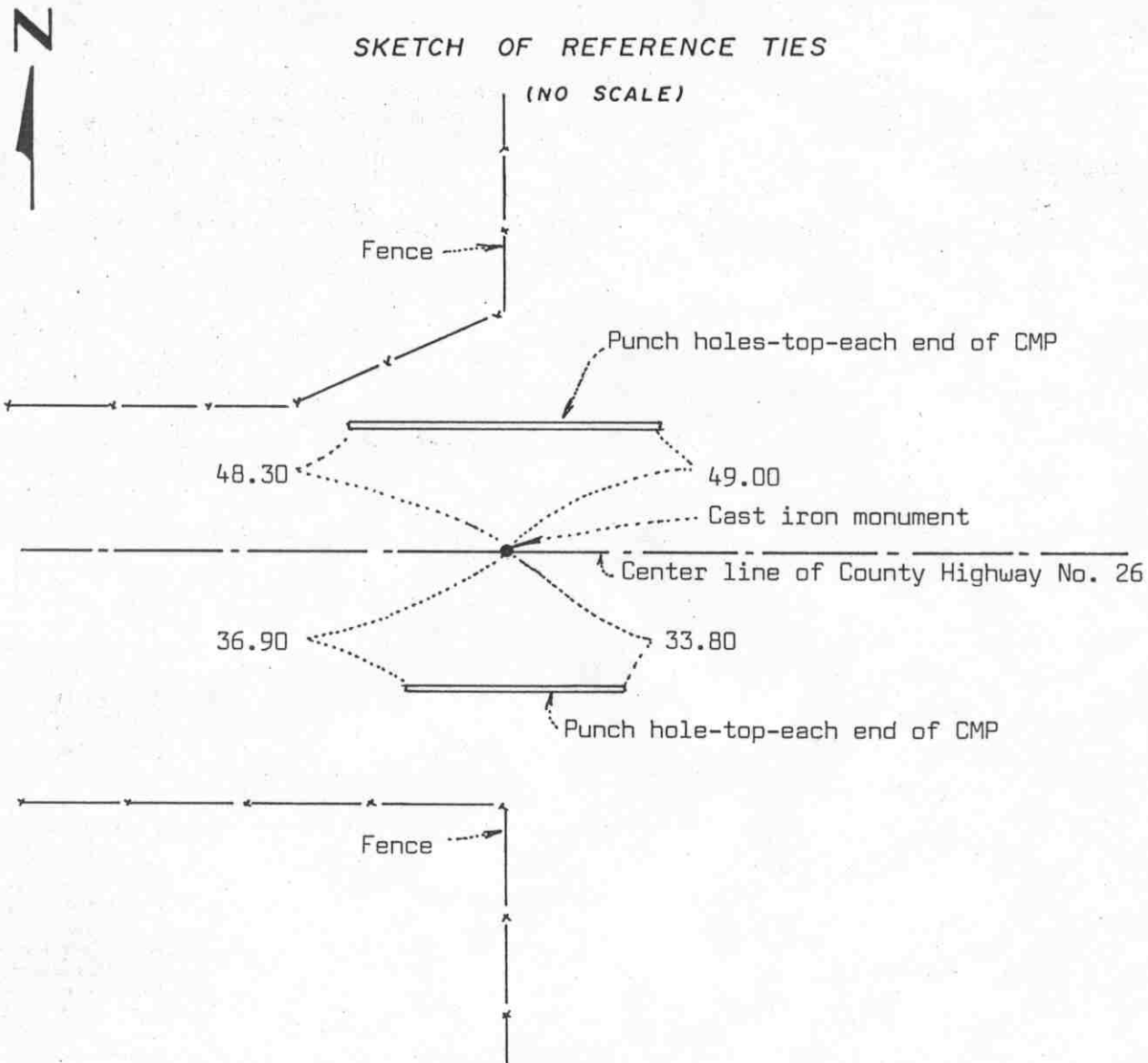
## Certificate of Location of Government Corner

This corner was established in 1855 by Thomas Simpson of the Government Land Office. He set a post in mound with trench and pits and charred stake and he planted osage orange seeds at the northeast and southwest corners of the mound.

In 1895, I. C. Christlieb resurveyed the Township of Collins and set an iron monument at this corner.

In September, 1976, we found the monument set by Christlieb. This monument has perpetuated the correct location of the east quarter corner of Section 22.

# Certificate of Location of Government Corner



Statement of evidence relative to this corner location on sheet 2

I hereby certify that this document was prepared by me or under my direct supervision.

Willard Pellinen

Willard Pellinen  
McLeod County Surveyor  
License No. 9626

Date September 7, 1987

OFFICE OF THE COUNTY RECORDER  
MCLEOD COUNTY, MINNESOTA.

I hereby certify that this document was filed in this office at 8 o'clock A.M. on the 18th day of October, 1988.

Carmen Ostlie, County Recorder

By \_\_\_\_\_, Deputy

Document No. 225081

## *Certificate of Location of Government Corner*

This corner was established by Thomas Simpson, Government Surveyor in 1855 and was monumented by a wood post in a mound of earth.

In 1895, I.C.Christlieb remonumented Collins Township and he set an iron monument at this corner.

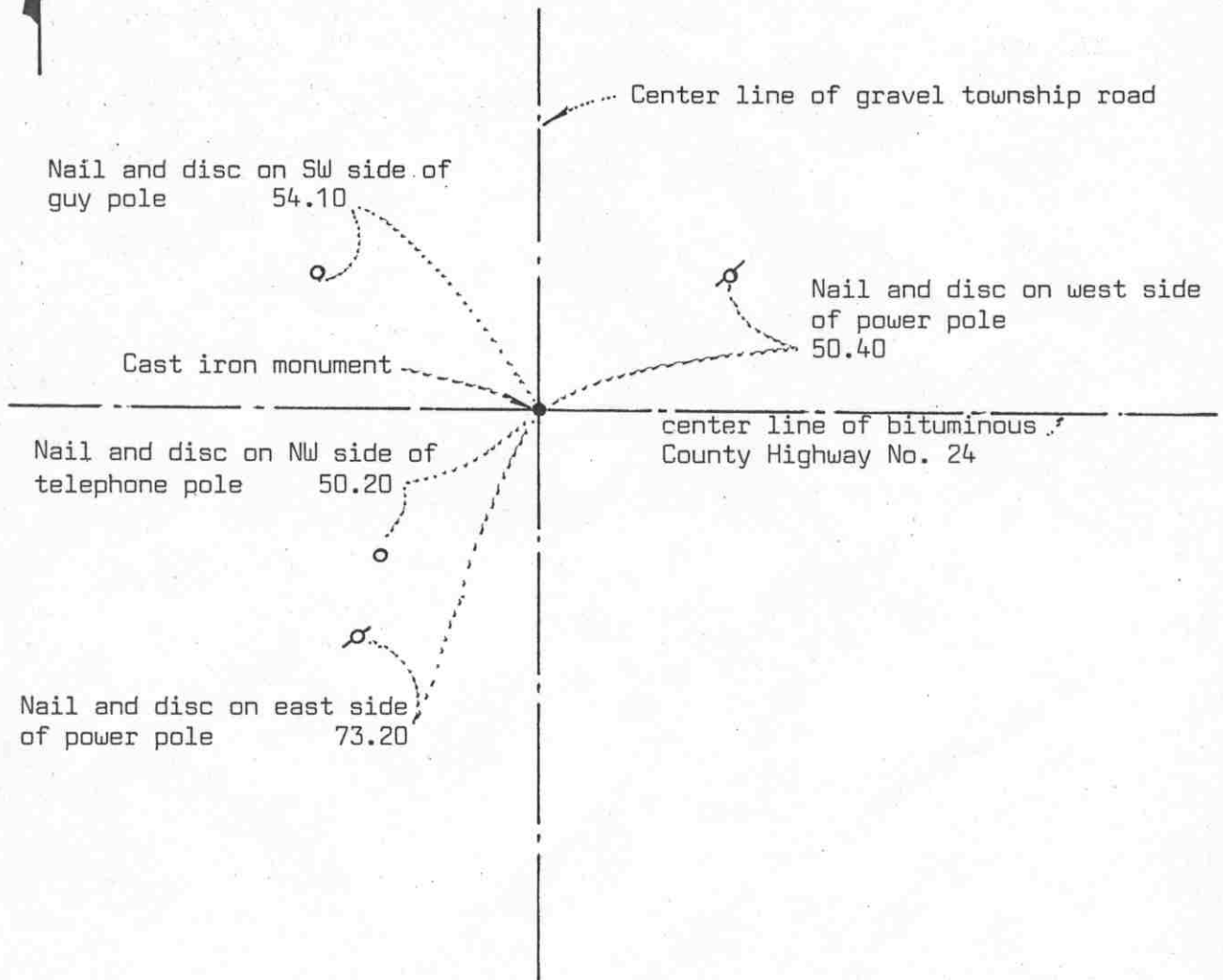
In May, 1973, McCombs-Knutson Associates (Dickman Knutson was McLeod County Surveyor) measured the north line of Section 22 and set a temporary northeast corner on the center line of the highway, fences running north and south.

On July 12, 1973 they dug for the corner (John Tupa from Hutchinson with a backhoe) Down at 6 feet below the road surface they found the 3 inch square iron monument set by Christlieb. They left the monument in place and took reference ties.

On June 11, 1974, MKA set a McLeod County cast iron monument, flush with the road surface, and took additional reference ties.

North Quarter corner, Section 22, Township 115 North, Range 30 West

## Certificate of Location of Government Corner


 SKETCH OF REFERENCE TIES  
 (NO SCALE)
Statement of evidence relative to this corner location on sheet 2

I hereby certify that this document was prepared by me or under my direct supervision.

Willard Pellinen

Willard Pellinen  
 McLeod County Surveyor  
 License No. 9626

Date September 13, 1987

OFFICE OF THE COUNTY RECORDER  
 MCLEOD COUNTY, MINNESOTA.

I hereby certify that this document was filed in this office at 8 o'clock A.M. on the 18th day of October, 19 88.

Arman (Stlie), County Recorder  
 By \_\_\_\_\_, Deputy

Document No. 225080

North Quarter            corner, Section 22, Township 115 North, Range 30 West

## *Certificate of Location of Government Corner*

This corner was originally established by the Government in 1855 and was monumented by a wood post in a mound.

In 1895, I.C.Christlieb remonumented Collins Township and set an iron monument at this corner.

In 1931, Carlisle Madson Sr. surveyed in Section 15 and found a 12 inch by 30 inch stone at the corner.

Old County Highway Engineer notes also show a stone at the quarter corner. They set a wood hub.

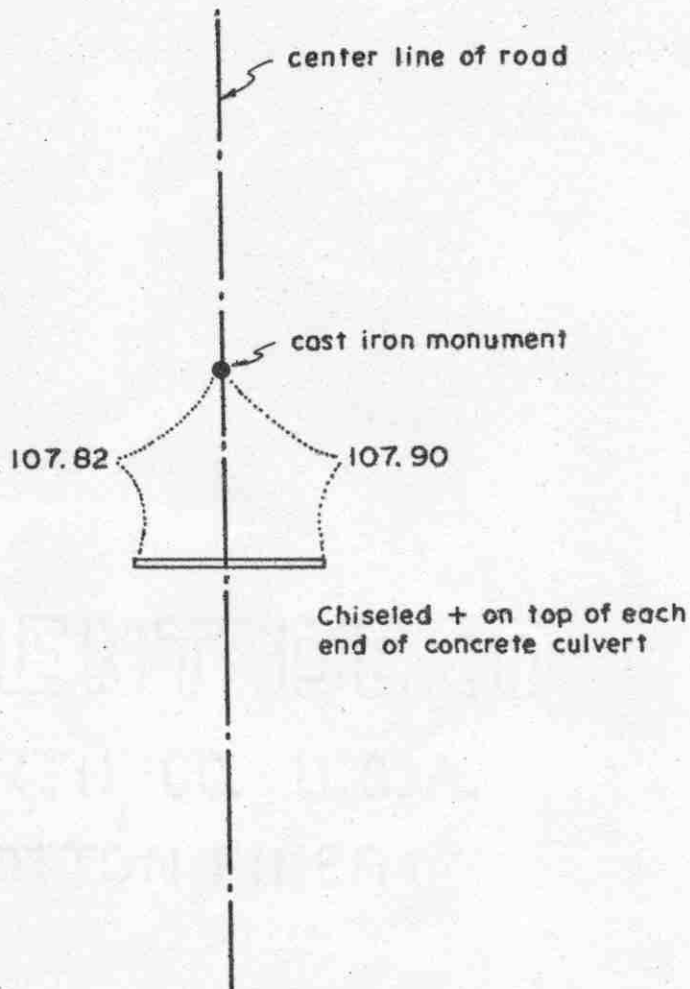
On July 12, 1973, McCombs Knutson Associates dug for the corner, John Tupa from Hutchinson with a backhoe. They found the 12 inch by 30 inch stone and a wood hub beside it. They took reference ties to the stone and on June 11, 1974 set a McLeod County cast iron monument.

EAST QUARTER corner, Section 23, Township 115 North, Range 30 West

## Certificate of Location of Government Corner



SKETCH OF REFERENCE TIES  
(NO SCALE)

Statement of evidence relative to this corner location on sheet 2

I hereby certify that this document was prepared by me or under my direct supervision.

Willard Pellinen

Willard Pellinen  
McLeod County Surveyor  
License No. 9626

Date 1/6/89

OFFICE OF THE COUNTY RECORDER  
MCLEOD COUNTY, MINNESOTA.

I hereby certify that this document was filed in this office at 1 o'clock P.M. on the 31st day of Jan., 1989.

Carmin Ostlie, County Recorder

By \_\_\_\_\_, Deputy

Document No. 226738

EAST QUARTER corner, Section 23, Township 115 North, Range 30 West

## Certificate of Location of Government Corner

This corner was established in 1855 by Thomas Simpson of the Government Land Office. He set post in mound with trench, pits, charred stake and planted osage orange seeds at the northeast and southwest corners of the mound.

In 1895, I. C. Christlieb resurveyed the Township of Collins and his map shows a stone at this corner.

In July, 1976, we measured the east line of Section 23 and set a temporary east quarter corner at approximately half way between the section corners. We dug for corner, John Tupa from Hutchinson with a backhoe. We found a stone with a wood stake beside it down  $1\frac{1}{2}$  feet below the road surface. We dug deeper but found nothing else.

On September 21, 1976, we set a McLeod County cast iron monument at the location of the found stone. This corner is within 0.1 foot of being half way between the section corners.

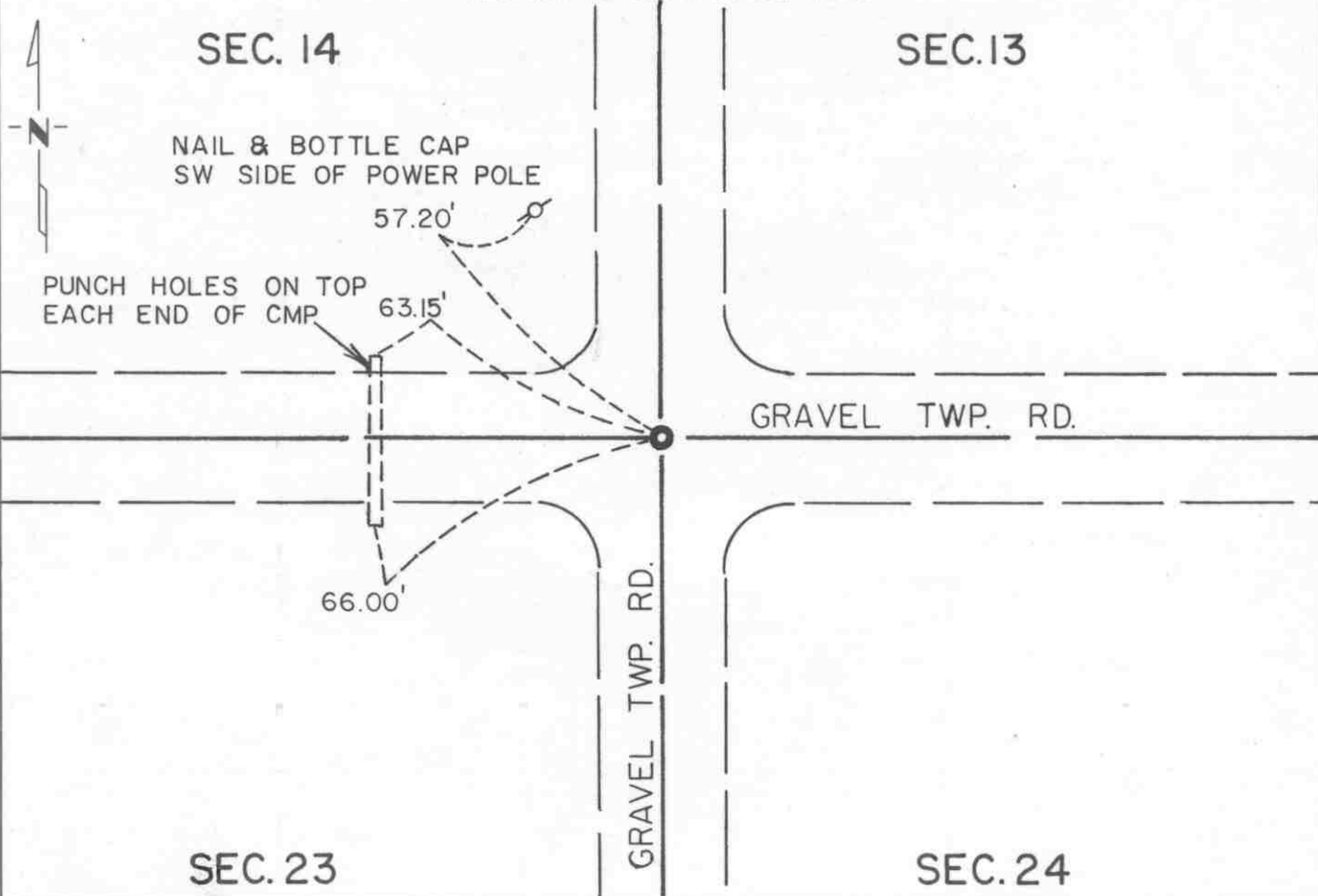
We accept this location as the correct east quarter corner of Section 23 as perpetuated by the stone.

**CERTIFICATE OF LOCATION OF GOVERNMENT CORNER**Northeast Corner of Section 23, Township 115 N, Range 30 W, 5th P.M.STATE OF MINNESOTA, County of McLeod

At the corner location shown on the sketch:

☒ On Apr. 16, 1990 found a cast iron monument near the road surface and set a  
DATE P.K. nail over it at the surface☒ left monument as found, ☐ lowered monument, ☐ removed monument (explain)☐ On \_\_\_\_\_ placed a \_\_\_\_\_  
DATE \_\_\_\_\_

## SKETCH OF REFERENCE TIES



Statement of evidence relative to this corner location is on back of page.

I hereby certify that this document and the data contained herein was prepared by me or under my direct supervision.

Robert G. Jones 8-19-91  
SIGNATURE DATE

Registration No. 11864☒ Land Surveyor, ☐ Professional Engineer☐ County Surveyor, ☐ County Engineer

## OFFICE OF THE COUNTY RECORDER

County of McLeodI hereby certify that this document was filed in the Co. Recorders office at 2 P.M. on the 18th day of Sept A.D., 1991County Recorder Armen Ostlin

By \_\_\_\_\_, Deputy

DOCUMENT NO. 241029



Statement of Evidence:

Northeast Corner Section 23, T 115 N, R 30 W

- 1855 - The original Public Land Survey was completed by Thomas Simpson. A wood post was set over a charred stake in a dirt mound to mark the corner. Trenches and pits were dug to build the mound. Osage orange was planted at the northeast and southwest corners of the mound.
- 1895 - I. C. Christlieb, McLeod County Surveyor, surveyed Collins Township. A map of his survey shows that a stone was found at this corner.
- 1941 - The McLeod County Highway Department set an iron pin over a stone that they found.
- 1973 - Dickman Knutson, McLeod County Surveyor, dug for the corner. A 1/2" diameter iron pin was found 2 feet below the road surface. A 12" diameter stone with a wood lath beside it was found directly below the iron pin. Reference ties were set. The corner was located at the centerlines of roads north/south and east/west.
- 1974 - Dickman Knutson set a McLeod County cast iron monument directly above the iron pin and stone.
- 1990 - R. C. Jones, Registered Land Surveyor with Mn/DOT, found the cast iron monument near the surface of the road.

The cast iron monument is accepted as the corner location because the stone directly below it has marked the corner for at least 95 years and the stone was probably set according to evidence of the original Public Land Survey corner. It is located at the centerlines of roads east/west and north/south.

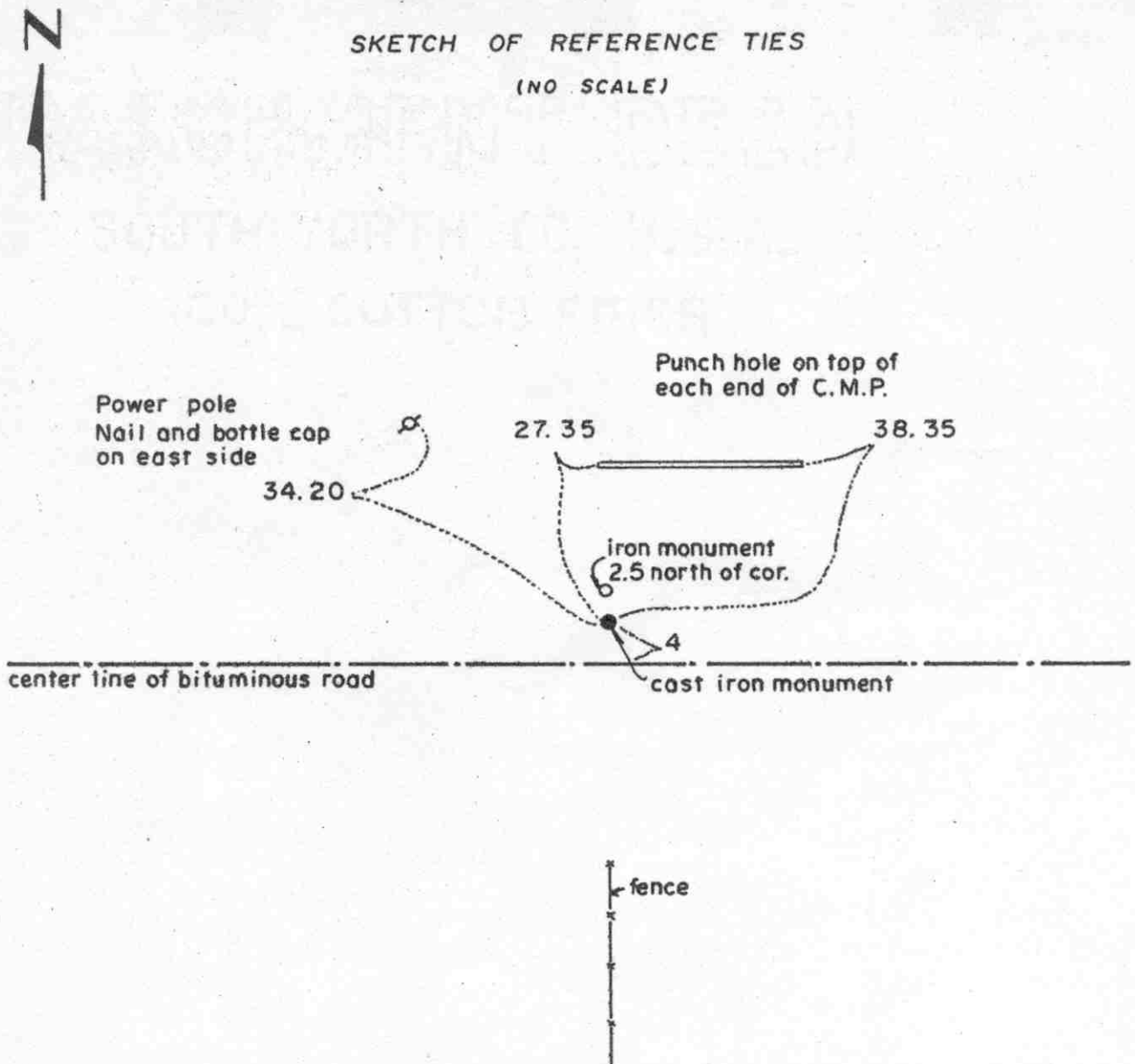
For additional information, contact the Mn/DOT Surveys Section at Willmar, Mn 56201.

NORTH QUARTER corner, Section 23, Township 115 North, Range 30 West

# Certificate of Location of Government Corner

## SKETCH OF REFERENCE TIES

(NO SCALE)



Statement of evidence relative to this corner location on sheet 2

I hereby certify that this document was prepared by me or under my direct supervision.

Willard Pellinen

Willard Pellinen  
McLeod County Surveyor  
License No. 9626

Date 1/7/89

OFFICE OF THE COUNTY RECORDER  
MCLEOD COUNTY, MINNESOTA.

I hereby certify that this document was filed in this office at 1 o'clock P.M. on the 31st day of Jan., 19 89.

Armin Ostlie, County Recorder

By \_\_\_\_\_, Deputy

Document No. 226739

NORTH QUARTER corner, Section 23, Township 115 North, Range 30 West

## Certificate of Location of Government Corner

This corner was established in 1855 by Thomas Simpson of the Government Land Office. His notes show he set quarter section post in mound with trench, pits and charred stake and he planted osage orange seeds at the northeast and southwest corners of mound.

In 1895, I. C. Christlieb resurveyed Collins Township and he set a monument  $2\frac{1}{2}$  feet north of the true corner.

On May 16, 1973, we found the monument set by Christlieb down 2 feet below the road surface. We set an iron pipe  $2\frac{1}{2}$  feet south of the monument and took reference ties.

On June 11, 1974, we set a McLeod County cast iron monument.

This corner was an obliterated corner but has been perpetuated by monument set by Christlieb  $2\frac{1}{2}$  feet north of the true corner.

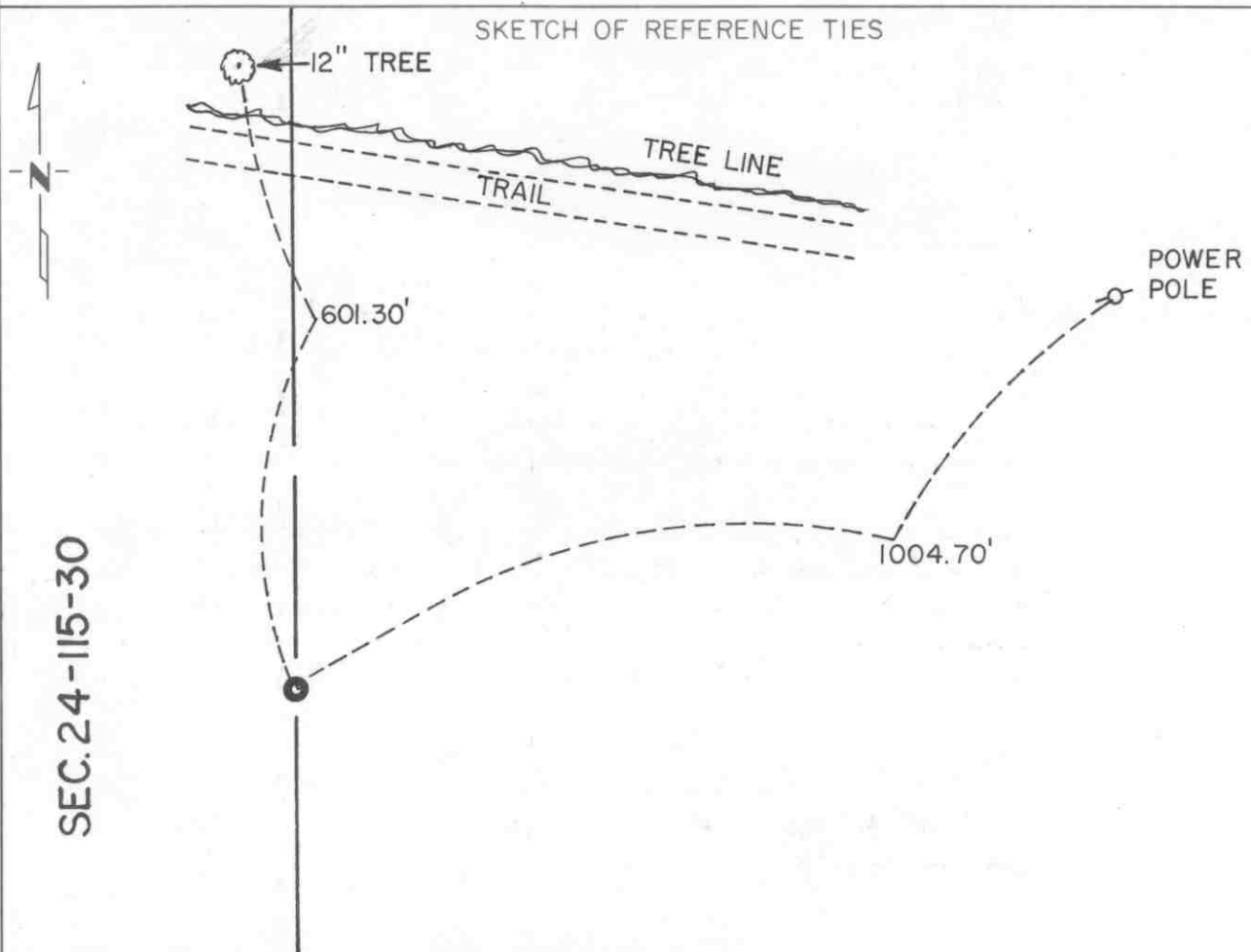
**CERTIFICATE OF LOCATION OF GOVERNMENT CORNER**East Quarter \_\_\_\_\_ Corner of Section 24, Township 115 N, Range 30 W, 5th P.M.STATE OF MINNESOTA, County of McLeod

At the corner location shown on the sketch:

☒ On June 13, 1991 found a cast iron monument about 3" below ground surface in  
a small patch of grass in a cultivated field-orange pennant on plastic pole  
1' north ☒ left monument as found, ☐ lowered monument, ☐ removed monument (explain)

☐ On \_\_\_\_\_ placed a \_\_\_\_\_  
 \_\_\_\_\_  
 \_\_\_\_\_

SKETCH OF REFERENCE TIES



Statement of evidence relative to this corner location is on back of page.

I hereby certify that this document and the data contained herein was prepared by me or under my direct supervision.

Robert J. Gaus 8-19-91  
 SIGNATURE DATE

Registration No. 11864☒ Land Surveyor, ☐ Professional Engineer☐ County Surveyor, ☐ County Engineer

OFFICE OF THE COUNTY RECORDER

County of McLeod

I hereby certify that this document was filed in the Co. Recorders office at 2 P .M. on the 18th day of Sep A.D., 1991

County Recorder Carmen Estlie

By \_\_\_\_\_, Deputy

DOCUMENT NO. 241031

Statement of Evidence:

East Quarter Corner Section 24, T 115 N, R 30 W

- 1855 - The original Public Land Survey of the township line was completed by John Ryan. A wood post was set over a deposit of charcoal in a dirt mound to mark the corner. Trenches and pits were dug to build the mound. Osage orange was planted at the corners of the mound.
- 1896 - I. C. Christlieb, McLeod County Surveyor, set a 2 1/2" by 1 1/2" rectangular iron bar to mark the corner. The measurements from this corner to the section corners north and south of it were both 2657 feet.
- 1941 - The Minnesota Highway Department right of way map depicts the corner to be about 1035 feet west of a P.O.S.T. 1430.3 feet ahead of T.H. 15 P.I. 769+87.2 as scaled on the map.
- 1970 - Dickman Knutson, McLeod County Surveyor, set a cast iron monument to mark the corner. It was set by single proportionate measurement of Christlieb's survey. The distances to the section corners closely agreed with Christlieb's dimensions.
- 1990 - Willard Pellinen, McLeod County Surveyor, traversed around Section 19-115-29 and recovered this corner in the process.  
  
A Mn/DOT survey crew recovered the cast iron monument.
- 1991 - R. C. Jones, Registered Land Surveyor with Mn/DOT, found the cast iron monument about 3" below the ground in a cultivated field. There are no occupation lines in the immediate area.

The cast iron monument is accepted as the corner location because it fits the measurements shown by Christlieb's survey within 0.6 feet. Also, it is located 1042.07 feet westerly of the P.O.S.T. 1430.3 feet ahead of T.H. 15 P.I. 769+87.2, which substantially fits the location depicted on the right of way map.

For additional information, contact the Mn/DOT Surveys Section at Willmar, Mn 56201.

**CERTIFICATE OF LOCATION OF GOVERNMENT CORNER**

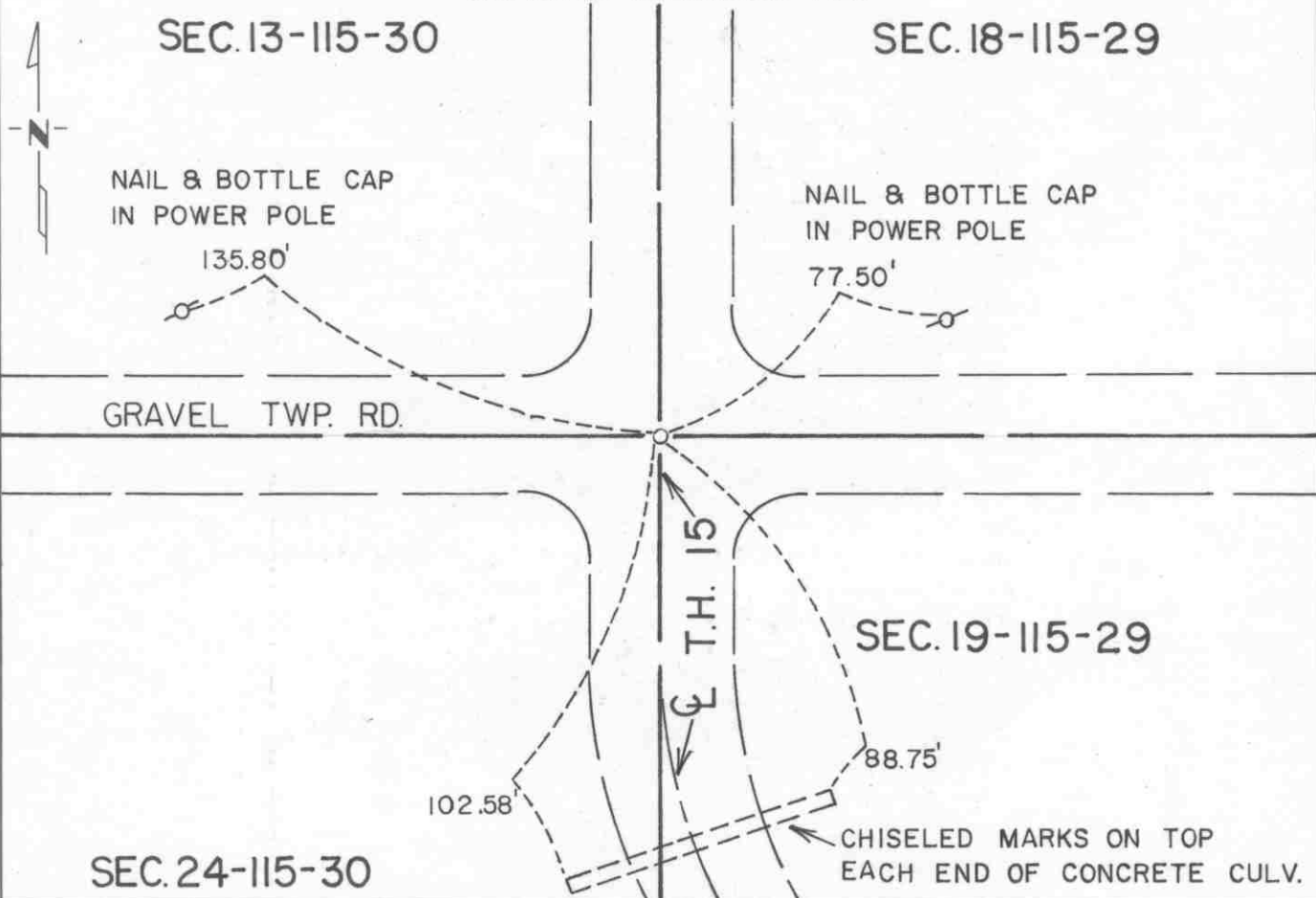
Northeast Corner of Section 24, Township 115 N, Range 30 W, 5th P.M.  
 STATE OF MINNESOTA, County of McLeod

At the corner location shown on the sketch:

☒ On Apr. 16, 1990 found a P.K. nail at the surface of the highway which fit  
DATE old reference ties

☒ left monument as found, ☐ lowered monument, ☐ removed monument (explain)

☐ On \_\_\_\_\_ placed a \_\_\_\_\_  
DATE

**SKETCH OF REFERENCE TIES**

Statement of evidence relative to this corner location is on back of page.

I hereby certify that this document and the data contained herein was prepared by me or under my direct supervision.

Robert Claus 8-19-91  
SIGNATURE DATE

Registration No. 11864

☒ Land Surveyor, ☐ Professional Engineer

☐ County Surveyor, ☐ County Engineer

**OFFICE OF THE COUNTY RECORDER**

County of McLeod

I hereby certify that this document was filed in the Co. Recorders office at 2 P .M. on the 18th day of Sep A.D., 1991

County Recorder Carmen Bette

By \_\_\_\_\_, Deputy

DOCUMENT NO. 241030

Statement of Evidence:

Northeast Corner Section 24, T 115 N, R 30 W

- 1855 - The original Public Land Survey of the township line was completed by John Ryan. A wood post was set over a deposit of charcoal in a dirt mound. Trenches and pits were dug to build the mound. Osage orange was planted at the corners of the mound.
- 1941 - The Minnesota Highway Department right of way map shows the corner to be at T.H. 15 P.O.S.T. 606.9 feet ahead of P.I. 806+19.3. It was located at the centerline of an east/west road, in line with a fence to the south, and in line with the centerline of a road to the north.
- 1942 - All evidence of the corner was probably destroyed when T.H. 15 was graded.
- 1965 - Dickman Knutson, McLeod County Surveyor, found a spike at the surface of T.H. 15. It was located on the centerline of an east/west road and on the centerline tangent of T.H. 15 extended southerly.
- 1989 - Willard Pellinen, McLeod County Surveyor, found a P.K. nail at the surface of T.H. 15, which fit the reference ties set in 1965.
- 1990 - R. C. Jones, Registered Land Surveyor with Mn/DOT, found the P.K. nail at the surface of T.H. 15. All but one of the reference were still there.

The P.K. nail is accepted as the corner location because it was found to be at a P.O.S.T. 604.15 feet ahead of P.I. 806+19.30, which substantially fits the location shown on the right of way map. It is also on the centerline of an east/west road.

For additional information, contact the Mn/DOT Surveys Section at Willmar, Mn 56201.

North Quarter Corner of Section 24, Township 115 N, Range 30 W, 5th P.M.

At the corner location shown on the sketch:

On Apr. 16, 1990 found a cast iron monument at the road surface  
DATE

☒ left monument as found, ☐ lowered monument, ☐ removed monument (explain)

☐ On \_\_\_\_\_ placed a \_\_\_\_\_

## SKETCH OF REFERENCE TIES

SEC.13



OF C.S.A.H. 26

31.40

243.65

PUNCH HOLE ON TOP  
EACH END OF CMP

FIELD ROAD

SEC. 24

Statement of evidence relative to this corner location is on back of page.

I hereby certify that this document and the data contained herein was prepared by me or under my direct supervision.

*Robert Gano*  
SIGNATURE

8-19-91  
DATE

Registration No. 11864

☒ Land Surveyor, ☐ Professional Engineer

☐ County Surveyor,    ☐ County Engineer

OFFICE OF THE COUNTY RECORDER

County of McLeod

I hereby certify that this document was filed in  
the Co. Recorders office at 2 P .M. on the  
18th day of SEP 1991

County Recorder Armen D. Blue

By \_\_\_\_\_, Deputy

DOCUMENT NO. **241032**



Statement of Evidence:

North Quarter Corner Section 24, T 115 N, R 30 W

- 1855 - The original Public Land Survey was completed by Thomas Simpson. A wood post was set over a charred stake in a dirt mound to mark the corner. Trenches and pits were dug to build the mound. Osage orange was planted at the northeast and southwest corners of the mound.
- 1895 - I. C. Christlieb, McLeod County Surveyor, resurveyed Collins Township. His map of the survey shows that a stone was found at this corner.
  - Old McLeod County Highway Department survey notes show a stone at this corner.
- 1973 - Dickman Knutson, McLeod County Surveyor, dug for the corner. A stone was found 3 feet below the road surface. Reference ties were set and the excavation was continued. Another stone with a rotted wood stake beside it was found 5 feet below the road surface. The second stone was directly below the first stone.
- 1974 - Dickman Knutson set a McLeod County cast iron monument directly above the found stones.
- 1991 - R. C. Jones, Registered Land Surveyor with Mn/DOT, found the cast iron monument at the road surface. All reference ties were recovered.

The cast iron monument is accepted as the corner location because the lowest stone directly below it was probably set according to evidence of the original Public Land Survey corner and has marked the corner position for at least 95 years. It is at the centerline of an east/west road.

For additional information, contact the Mn/DOT Surveys Section at Willmar, Mn 56201.